

01 Wallpack TWP

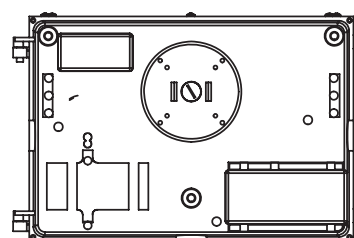


WARNING

1. Ensure power is off before starting installation, wiring or attempting any maintenance should be performed by a person familiar with the construction and operation of the product and hazards involved to ensure personal safety.
2. All work should be performed by a qualified electrician.
3. The wall should have the enough strength for installing the fixture; its endurance must be more than the weight of the fixture.

INSTALLATION

1. Turn off power
2. Prepare the back plate for mounting by drilling or knocking out the appropriate holes (Diagram 1)
3. Line up the back plate in desired location and mount securely. (Two gaskets provided for weather-tight seal between template and junction box.) (Figure 1)
4. Connect the output lines: (Diagram 2)
 Fire wire (L) to the Black line
 Neutral wire (N) to the White line
 Ground wire (G) to the Green line
5. Put the cover on by connect the hinge. (Figure 2)
6. Close and lock the cover (Figure 3)
7. Turn on the power



The backplate has a cast-in drill and knock-out template to match any standard recessed junction box

Diagram 1

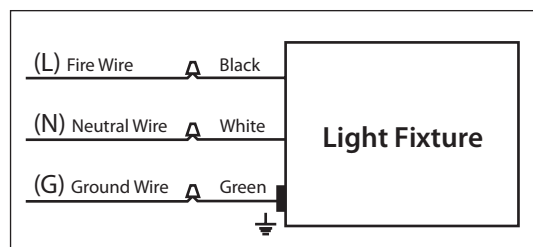


Diagram 2

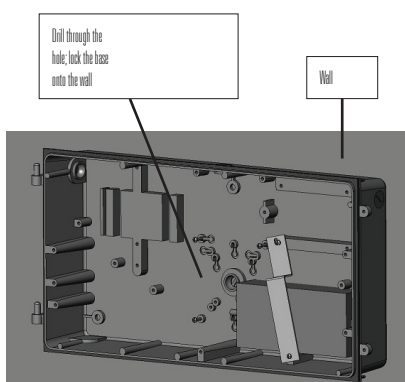


Figure 1

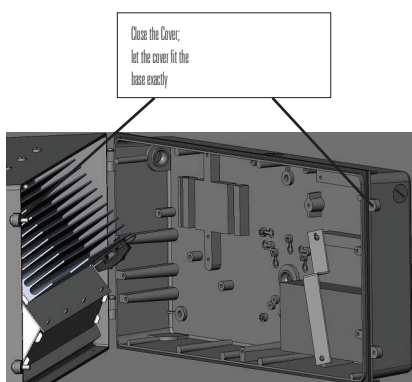


Figure 2

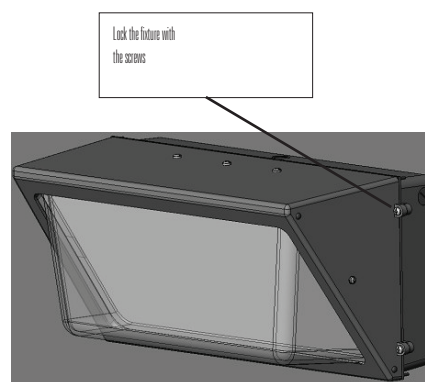


Figure 3